

What is Geolocation?

Geolocation is the process of identifying your location via your mobile device, tablet, laptop or even desktop computer. The MLS portal uses this to enhance the user experience and also as a security measure. The browser you are using will ask you for your permission to give your location.

The first time an app that uses the Windows location service needs your device location or location history, it requests your permission. If you give an app permission but you change your mind later, you can turn off that app's access to your device.

Q. If you can get my location, do you know who I am?

A. No. The only information known is there is a device at a location. That's it. The geolocation cannot tell who you are or track anything you do.

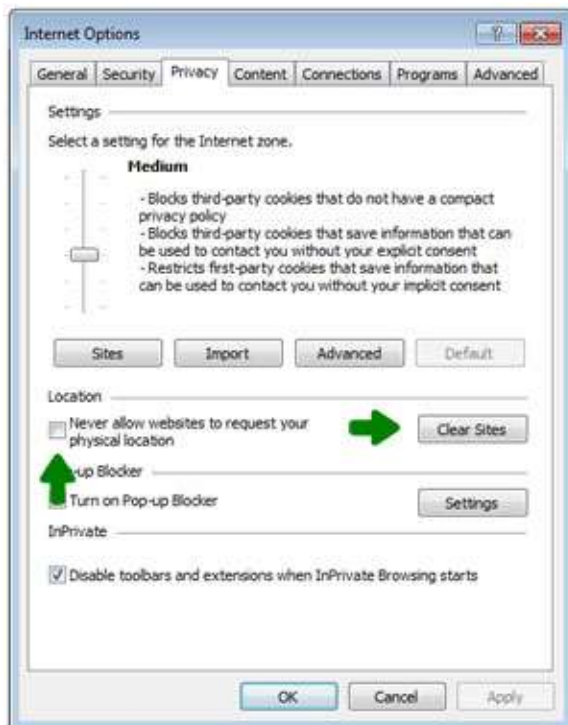
Q. What if I have chosen not to allow my browser to give my location and now I would like to give it?

A. You can easily allow your browser to give your location. See how below for each of the major browsers.

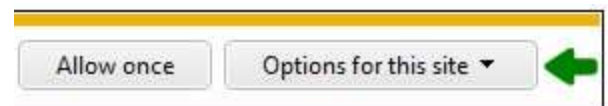
Find your favorite browser below and learn how to find your location settings.

Internet Explorer

Under **Tools>> Internet Options>> Privacy** - look under the **Location** section, press the "**Clear Sites**" button and be sure "Never allow websites to request your physical location" is **unchecked**. Press OK.



Then refresh the screen showing the portal by pressing the **F5** button, got to grar.org and click "I'm a member and before you click on the Rochester/GRAR logo and you should see a box appear on the bottom of the screen asking for you permission to give your location. Select "**Options for this site**" and "**Always allow**".



Technology Tips

GRAR | Education. Information. The tools and support you need.

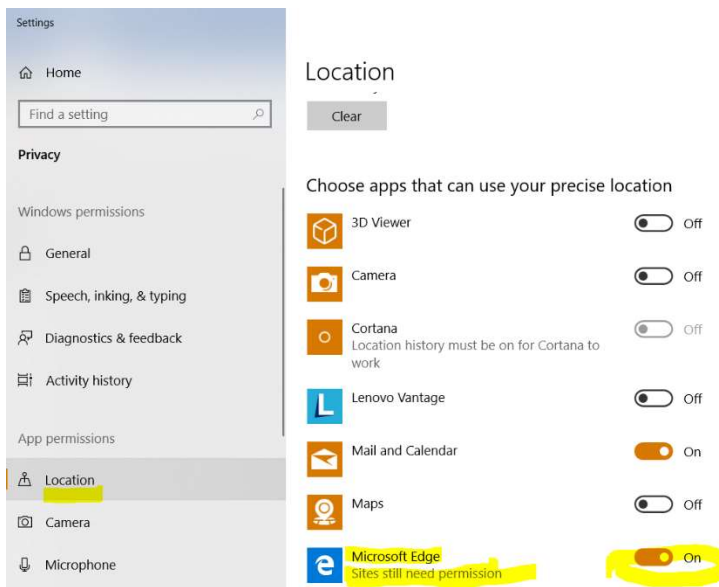
P. 1 of 4

GRAR Member Services | M-TH 8:30am-4:30pm, Fri 9:30am-4:30pm | **585.292.5000** | GrarHelpDesk@grar.net

Matrix MLS Support | Contact AnswerLink M-F 8:30am-8:30pm, Sat-Sun 8:30am-3:30pm | **888.825.5472**

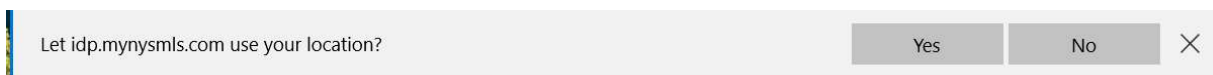
Last update: 18-Oct-19

Microsoft Edge

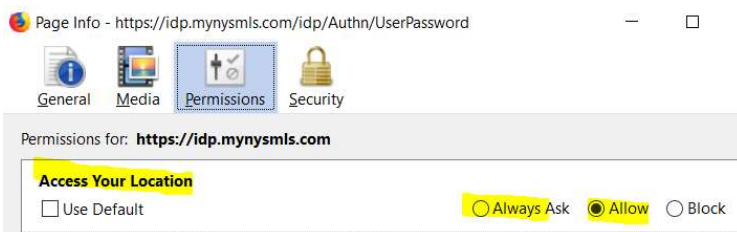


1. Select the Windows **Start** icon, located in the lower left-hand corner of your screen.
2. When the pop-up menu appears, select the **Settings** option.
3. The **Windows Settings** dialog should now be visible, overlaying your desktop or browser window. Select **Location**, located in the left menu pane.
4. Scroll down to the section labeled **Choose apps that can use your location** and locate **Microsoft Edge**. By default, location-based functionality is disabled in the Edge browser. To enable it, select its accompanying button so that it turns blue and white and reads **On**.

Even after enabling this feature, sites will always need to explicitly ask your permission prior to utilizing location data.

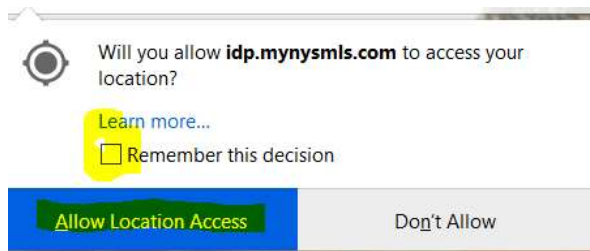


Mozilla Firefox



1. Open Firefox and navigate to the portal at **portal.mynysmls.com**.
2. From the **Tools** menu at the top of your Firefox window (if it's not visible, press F11), select **Page Info**.
3. Select the **Permissions** tab. Change the setting for **Access Your Location**. **Note** – you may have to select or deselect 'Always Ask' so that you may select 'Allow'. **You may X out of Close this screen.**


Then refresh the screen showing the portal by pressing the F5 button and you should see a box appear asking for you permission to give your location. Select Share Location or choose from the dropdown list.



Technology Tips

GRAR | Education. Information. The tools and support you need.


 Google Chrome

Click the **Chrome menu icon**  all the way to the right on the Chrome Toolbar. Select **Settings**. Click **Show Advanced Settings** (at the bottom of screen). Scroll up to the "**Privacy**" section and click **Site Settings**. In the dialog that appears, scroll down to the "**Location**" section. Select your default permission for future location (we recommend 'Ask when a site tries to track your physical location'). Click **Manage exceptions** to remove previously-granted permissions or denials for specific sites. Click on **Done** and close Chrome.

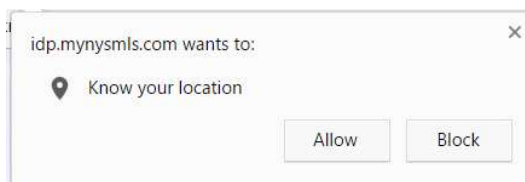
1. Select Chrome's main menu button, marked with three vertical dots in the upper right-hand corner of the browser.
2. When the drop-down menu appears, select **Settings**.
3. Chrome's **Settings** interface should now be displayed in a new tab or window. Scroll to the bottom of the page and select the **Advanced** link.
4. Locate the section labeled **Privacy and security**. Select the **Site settings** button, found within this section.
5. Chrome's **Site settings** should now be displayed in a new window, overlaying the existing interface. Find the section labeled **Location**,
6. **If you see a blue "Ask before accessing (recommended)" switch, Chrome will ask you if you want to allow your location and add the URL for our MLS to your Allowed List.**



If you see a grey switch and the word Blocked, please switch the switch to blue so it shows as on. If blocked, then no sites will ask you for your location.



7. Open Chrome and go to grar.org, after you click "I'm a Member", you should see a box appear asking for your permission to give your location. Select **Allow**. This will add





Safari (macOS Only)

1. Select **Safari** in your browser menu, located at the top of the screen.
2. When the drop-down menu appears, select the **Preferences** option. You can also use the following keyboard shortcut in place of clicking on this menu item: **COMMAND+COMMA(,)**.
3. Safari's **Preferences** dialog should now be displayed, overlaying your browser window. Select the **Privacy** icon.
4. Located within the **Privacy Preferences** is a section labeled **Website use of location services**, containing the following three options; each accompanied by a radio button.
 1. **Prompt for each website once each day:** If a website attempts to access your location data for the first time that day, Safari will prompt you to allow or deny the request.
 2. **Prompt for each website one time only:** If a website attempts to access your location data for the first time ever, Safari will prompt you for the desired action.
 3. **Deny without prompting:** Enabled by default, this setting instructs Safari to deny all location-related data requests without asking for your permission.

Open Safari and go to www.grar.org. After selecting, I'm a Member, you should see a box appear asking for your permission to give your location. Select **Allow**.

