

Realist Map Views

The Realist Map contains several views that let you see different aspects about the properties you've selected on the Map:

- **Road:** The Road view is a standard Map view showing the roads and road names.
- **Aerial:** The Aerial view is a satellite view of the property from above, showing property details. This view is best for identifying properties visually.
- **Hybrid:** The Hybrid view shows an **aerial overlaid with roads and road names**. This shows lot boundaries but please keep in mind that you need to be zoomed in to see them.

If you want **lot dimensions** for a specific property in any of the above 3 views...

1. **Click within property boundaries** and you will see information about the property pop up. ex: Owner, APN, etc.
 2. At the bottom of the pop up message, you will also see map tools: Quick zoom, estimated lot dimensions, view report.
 3. If you click on '**estimated lot dimensions**', it will auto-pop the estimated property dimensions that you are inquiring about.
- **Birdseye:** The Birdseye view of a property shows an oblique 45 degree image of a property for a close-up view of the area from above.
 1. To change the direction of the Birdseye View only, click on the actual letter for the direction you would like to view from on the compass showing on the upper left of the map. Ex. Click on E, S or W (Default view if N) to change the view from that direction.

Click on the 'S' to change the view >>



Realist Map Tools (Ex. Boundary Tool to **view Flood Maps** and other overlays)

The Map tools allow you to customize the Map to give you a better perspective on a search area. This gives you the ability to visually scan important information about a property and its surrounding areas and also easily target properties in specific geographic areas.

Accessing the Map Tool Bar

The Realist Map tools are available on the toolbar on the right side of the Map when you are in the Road, Aerial or Hybrid view. Click any of the tools to open the tool options.



Boundaries

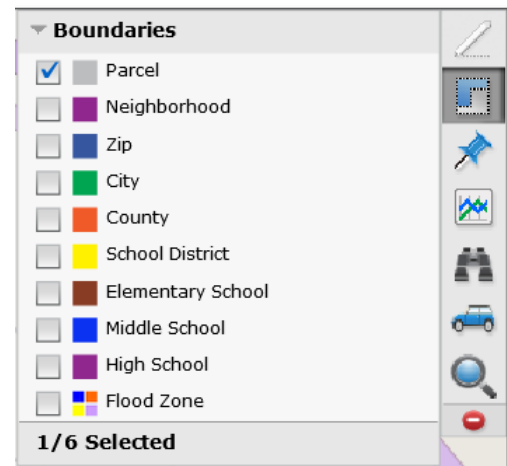
The **Boundaries** tool controls boundary lines that appear on the Map, including zip codes, county lines, parcel boundaries, school district boundaries, neighborhood boundaries and flood zones:

This is the 'Boundaries' icon on the tool bar. Click on this icon to reveal the boundary types available for that county. >>



These are the boundary choices that you may see for our area (may vary by county) >>

You may select up to 6 to use at one time and may need to zoom in for some to work (ex. Flood zones).



Viewing Property and Location Boundaries (including Flood Zones) on the Map

TIP: To view boundaries, you must be zoomed into the Map. If you are viewing a very large area, the boundary lines will not appear.

To Turn on a Boundary

1. On the **Map Toolbar**, click the **Boundaries** icon.
2. Select one or more boundaries you would like to display. You may need to zoom in or out on the Map to see the desired boundary. As you select each boundary, it will appear on the Map.

NOTE: You can select up to six boundaries.

To Turn Off a Boundary

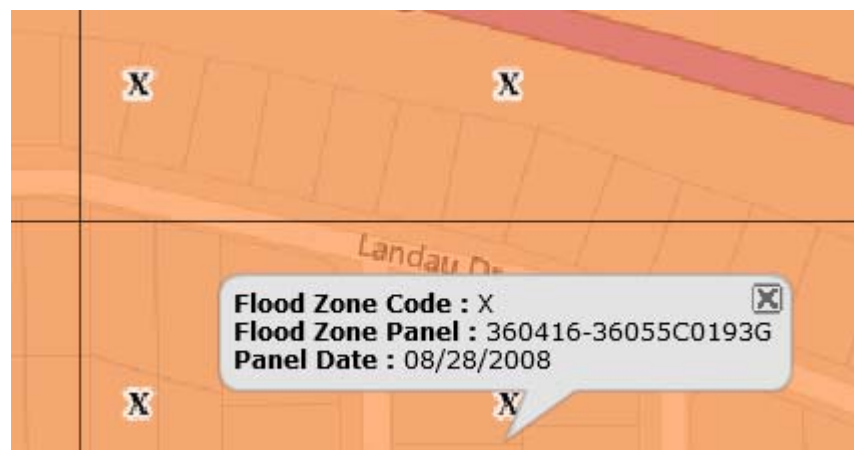
- To turn off one or more **Boundaries**, open the **Boundaries** tool and click the boundary check box to deselect it OR
- Click the **Clear All** button at the bottom of the **Map Toolbar**.

Using Quick Identify

You can always quickly view a parcel boundary by clicking any area of the Map. This also brings up the property detail hover box where you can view owner information and access the Quick Zoom and Reports links for the parcel or property.

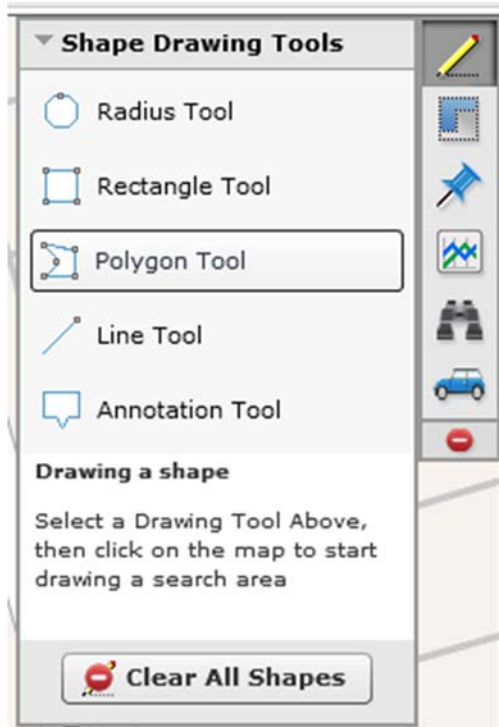
Quickly Access Flood Zone Data Directly From the Map

When the flood map layer is enabled in the Boundary menu, you are able to use **Ctrl+Click** to view the **code, panel and date of any flood area on the map**. With current flood data directly on the map, you can easily print or email this information to clients and interested prospects.



Drawing Tools

The drawing tools let you work directly on the Map to refine and enhance the area you are looking at:



The following drawing tools are available:

- **Shape Tools:** The shape tools allow you to draw a circle, rectangle, or polygon around an area to focus a search within the shape area, find properties within a certain radius of a school or other point of interest, and measure distances. You can draw up to five shapes covering an area up to 6.875 miles.
- **Annotation Tool:** You can annotate the Map so a cloud appears near an area with any notes you want to appear on the Map when you print it.

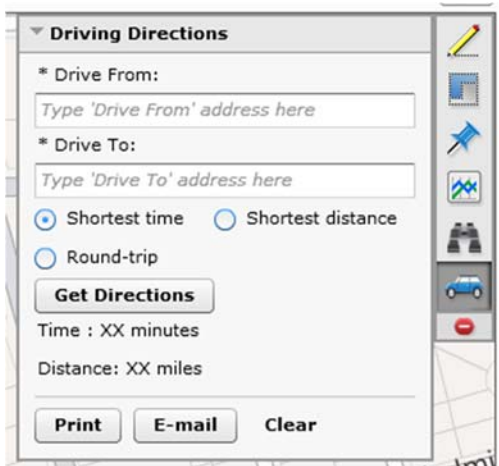
Refer to Help section in Realist for more information.

Realist Map Tools

From GRAR Member Services

Driving Directions

The Driving Directions tool lets you quickly find directions to a specific address and print or email them to yourself or a client. This tool helps you go directly from your research to your car and off to the property.



The screenshot shows a web-based interface for driving directions. It features a title bar "Driving Directions" with a dropdown arrow. Below the title bar are two input fields: "* Drive From:" and "* Drive To:", each with a placeholder text "Type 'Drive From' address here" and "Type 'Drive To' address here" respectively. There are three radio button options: "Shortest time" (selected), "Shortest distance", and "Round-trip". A "Get Directions" button is located below these options. Underneath, it displays "Time : XX minutes" and "Distance: XX miles". At the bottom, there are three buttons: "Print", "E-mail", and "Clear". To the right of the main form is a vertical toolbar with icons for editing, a map, a location pin, a compass, a car, and a red stop sign.

Refer to Help section in Realist for more information.